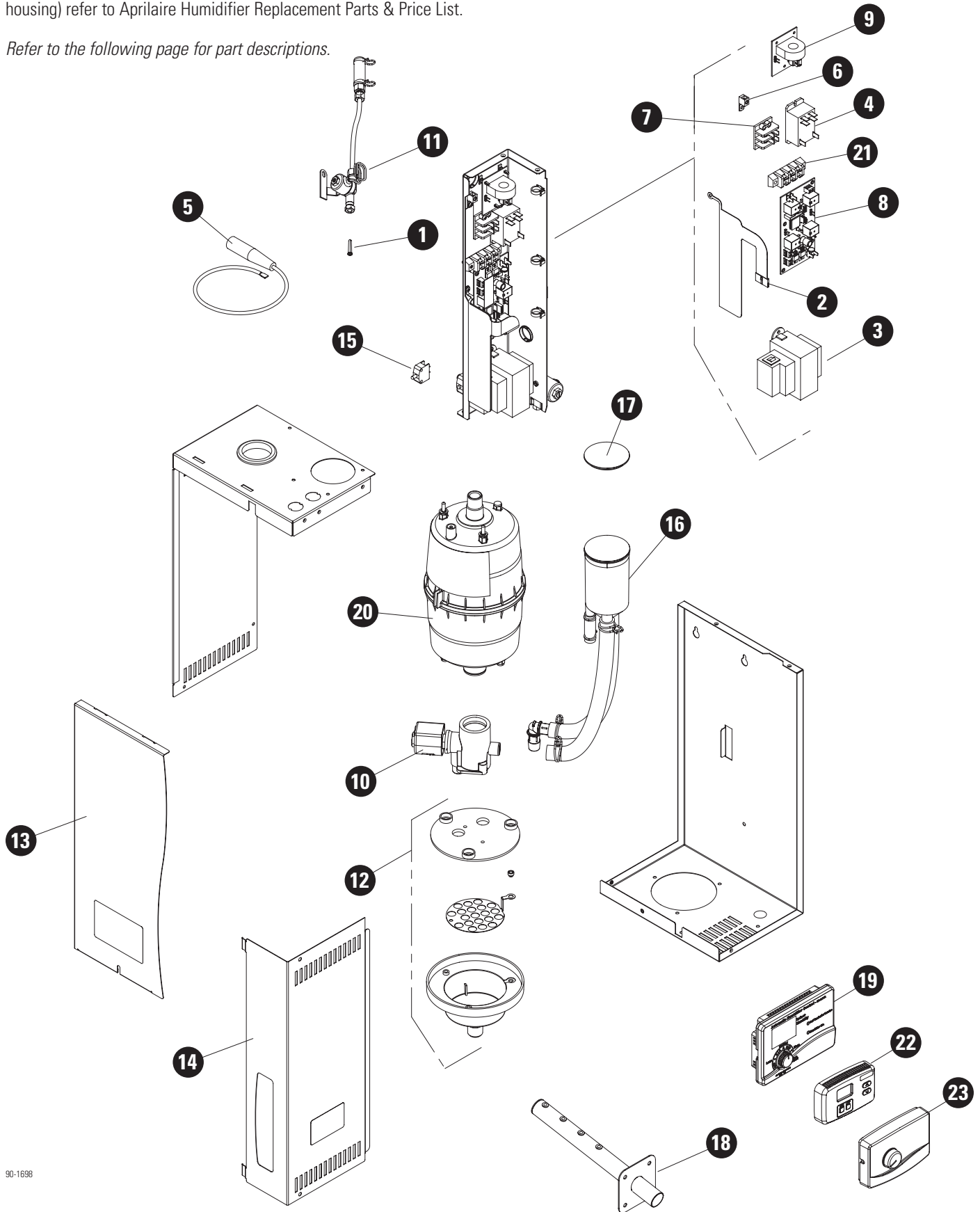


REPLACEMENT PARTS

Parts shown are for Model 800 Humidifiers manufactured after September 2011 (inlet valve extends out bottom of housing.) For parts for Model 800 humidifiers manufactured prior to October 2011 (inlet valve entirely inside housing) refer to Aprilaire Humidifier Replacement Parts & Price List.

Refer to the following page for part descriptions.



REPLACEMENT PARTS (CONTINUED)

Item No.	Part No.	Description
1	4004	Fill Valve In-line Strainer
2	4975	Membrane Switch
3	5306	Universal Transformer, Model 800
4	4977	Power Relay
5	4978	Electrode Wire (1)
6	4979	Ground Lug
7	5307	Input Power Terminal Block
8	4981	Internal Control Circuit Board
9	4982	Current Sensing Circuit Board
10	4983	Drain Valve
11	5309	Inlet Fill Valve & Water Feed System
12	4985	Drain Cup Assembly
13	4986	Front Panel & Screw
14	4987	Electrical Access Panel & Screws
15	4988	Safety Interlock Switch
16	4989	Fill Cup and Hoses

Item No.	Part No.	Description
17	4990	Fill Cup Cap
18	4991	Steam Dispersion Tube & Screws
19	62	Automatic Digital Control for Model 800
20	80	Steam Canister and O-Ring
21	5308	Transformer Terminal Block
22	65	Digital Manual Humidistat
23	4655	Manual Humidistat
	850	Aprilaire Fan Pack
	4001	Saddle Valve
	4028	Drain Trap & Tee
	4592	Airflow Proving Switch
	4594	High Humidity Limit Switch
	4851	Blower Activation Relay (Optional for use with manual humidistats)
	4856	Condensate Pump (Rated for 160°F)
	4973	Steam Hose (6 ft.) & Clamps
	4974	Drain Hose (10 ft.) & Clamps