

# Commercial Air Cleaners

## F90 Self-Contained Commercial Electronic Air Cleaner

Removes airborne contaminants from the air circulated through the unit.



- Removes up to 93 percent of the staining dirt from the air, based on the National Bureau of Standards Dust Spot Method using atmospheric dust and the ASHRAE Standard 52.1-1992.
- Draws in dirty air from below, cleans it electronically and distributes the clean air throughout the space using *Coanda Effect*.
- Includes system monitor light.
- Heavy duty commercial cells, prefilter, and grille are removable for cleaning.
- Optional remote switch for fan speed control and activated carbon filter for odor control.
- Safety interlock switch prevents operation when cover is open or the grille is not in place.
- Mounts on the ceiling.

### APPROVALS:

Underwriters Laboratories Inc. Listed: File E30954, Guide AGGZ.  
Canadian Standards Association Listed: File LR95329-8.

### RFI TESTING:

U.S. FCC Class B Limits for RFI, Canadian EMI Standard.

DIMENSIONS, APPROXIMATE: See Fig. 1.

### TEMPERATURE RATINGS:

Storage: -20 F to 120 F (-29 C to 49 C).

Operating: 90 F (32 C), brief periods as high as 120 F (49 C).

AIR FLOW: Capacity:

Fan Speed	cfm	m <sup>3</sup> /hr
Low	800	1360
Medium	1020	1730
High	1250	2125

AIR FLOW: Efficiency:

Fan Speed	Efficiency
Low	93%
Medium	85%
High	81%

### ELECTRICAL RATINGS:

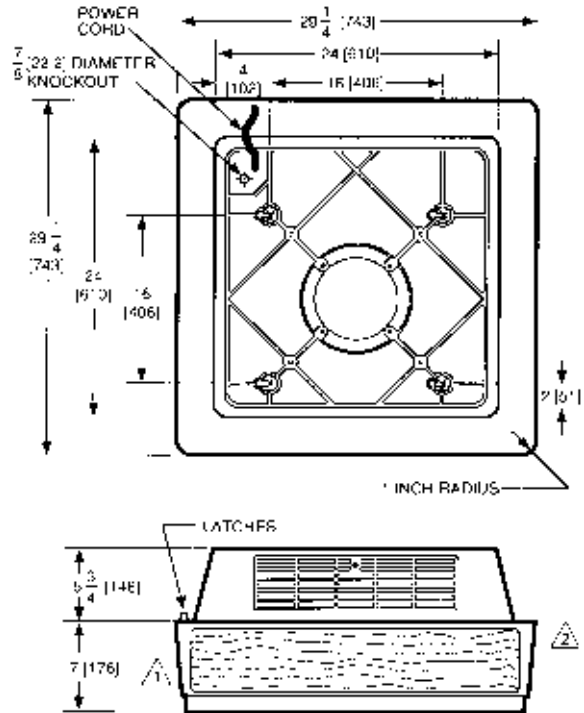
Power Supply: 120 Vac, 60 Hz; 220/240 Vac, 50 Hz.

Power Consumption: 270W max.

Current Draw:

Fan Speed	Current (A)	
	120	220/240
Low	1.8 A	0.8 A
Medium	2.0 A	1.0 A
High	2.6 A	1.4 A

F90A Installation dimensions in in. [mm].



- ▲ ALLOW AT LEAST 18 INCHES (456 MILLIMETERS) FROM FRONT OF F90 TO WALL FOR INSTALLATION AND REMOVAL OF CELLS
- ▲ ALLOW AT LEAST 9 INCHES (229 MILLIMETERS) FROM BACK OF F90 TO WALL FOR REMOVAL OF COVER.

M-530

Available only through Honeywell Commercial Air Quality Authorized Distributors.

\* TRADELINE models.

Order Number	Voltage	Description
*F90A1001	120 Vac, 60 Hz	Beige color
*F90A1050	120 Vac, 60 Hz	Woodgrain color